

Lampholders, Starters and Adapters

Fluorescent Lampholders



Compact Fluorescent Lampholders



Catalog Number	RL479HSM	RL413HSI	RL413HSM	RL426G24	RL42G11HSM	RL42G11H9	RL42G11C
Description	G23 base	GX23 base	GX23 base	G24Q-3, GX24Q-4	2G11 base, 4 pin	2G11 base, 4 pin	Clip for 2G11 lampholders base
Lamp Type	5W, 7W, 9W	13W	13W	26-32W	18-55W	18-55W	
Rating	75W 600V	75W 600V	75W 600V	75W 600V	75W 600V	75W 600V	
Mounting	Horizontal, screw-down	Horizontal, snap-in	Horizontal, screw-down	Horizontal, screw-down	Horizontal, screw-down	Vertical 90°, snap-in	Adjustable, snap-in

High Output Fluorescent Lampholders



Catalog Number	RL305*	RL306*	RL307	RL308	RL356	RL357
Description	Plunger	Fixed	Plunger	Fixed	Plunger	Fixed
Lamp Type	Horizontal - Recessed double contact	Horizontal - Recessed double contact	Horizontal - Recessed double contact	Horizontal - Recessed double contact	Vertical - Power groove & jacketed lamps	Vertical - Power groove & jacketed lamps
Rating	660W 600V	660W 600V	660W 600V	660W 600V	660W 600V	660W 600V
Mounting	Pedestal, slide-on	Pedestal, slide-on	Slide-on, snap-in	Slide-on, snap-in	Slide-on, snap-in	Slide-on, snap-in

Medium Bi-Pin Fluorescent Lampholders - T8 and T12



Catalog Number	RL320	RL325	RL325B
Description	Disconnect, 4-wire	Disconnect, 4-wire	Shunted, 2-wire
Lamp Type	Bi-pin/tall profile	Bi-pin/low profile	Bi-pin/low profile
Rating	660W 600V	660W 600V	660W 600V
Mounting	Slide-on and snap-in with captive nut	Slide-on and snap-in with captive nut	Slide-on and snap-in

Slimline Type Fluorescent Lampholder

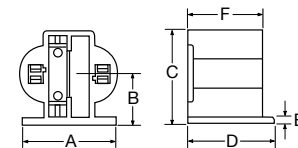


Catalog Number	RL310*	RL311*
Description	Plunger	Fixed
Lamp Type	Single pin	Single pin
Rating	660W 600V	660W 600V
Mounting	Slide-on and snap-in	Slide-on and snap-in

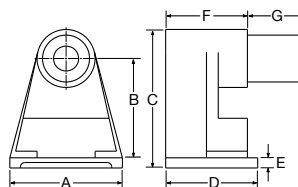
Note: *UL and cUL.

Product Dimensions Inches (mm)

	RL479HSM	RL413HSI	RL413HSM	RL426G24	RL42G11HSM	RL42G11H9
A	1.28" (32.5)	0.77" (19.5)	1.28" (32.5)	1.31" (33.3)	1.83" (46.5)	1.32" (33.5)
B	0.69" (17.5)	0.69" (17.5)	0.69" (17.5)	1.13" (28.7)	0.83" (21.0)	1.14" (29.0)
C	1.28" (32.5)	1.28" (32.5)	1.28" (32.5)	1.54" (39.1)	—	1.92" (48.7)
D	1.28" (32.5)	1.35" (34.3)	1.16" (29.5)	—	0.94" (24.0)	—
E	0.09" (2.3)	—	0.09" (2.3)	0.16" (4.0)	—	0.16" (4.0)



	RL305	RL306	RL310	RL311
A	1.45" (36.8)	1.45" (36.8)	1.54" (39.1)	1.31" (33.3)
B	1.20" (30.5)	1.20" (30.5)	1.50" (38.1)	1.13" (28.7)
C	1.90" (48.3)	1.90" (48.3)	1.90" (48.3)	1.54" (39.1)
D	1.26" (32.0)	1.26" (32.0)	—	—
E	0.14" (3.6)	0.14" (3.6)	0.14" (3.6)	0.16" (4.1)
F	1.12" (28.4)	1.12" (28.4)	0.75" (19.1)	1.20" (30.5)
G	0.75" (19.1)	—	1.12" (28.4)	—



	RL320	RL325/B
A	1.23" (31.2)	1.23" (31.2)
B	1.75" (44.5)	1.28" (32.5)
C	2.14" (54.4)	1.65" (41.9)
D	—	0.70" (17.8)
E	0.38" (9.7)	0.37" (9.4)

